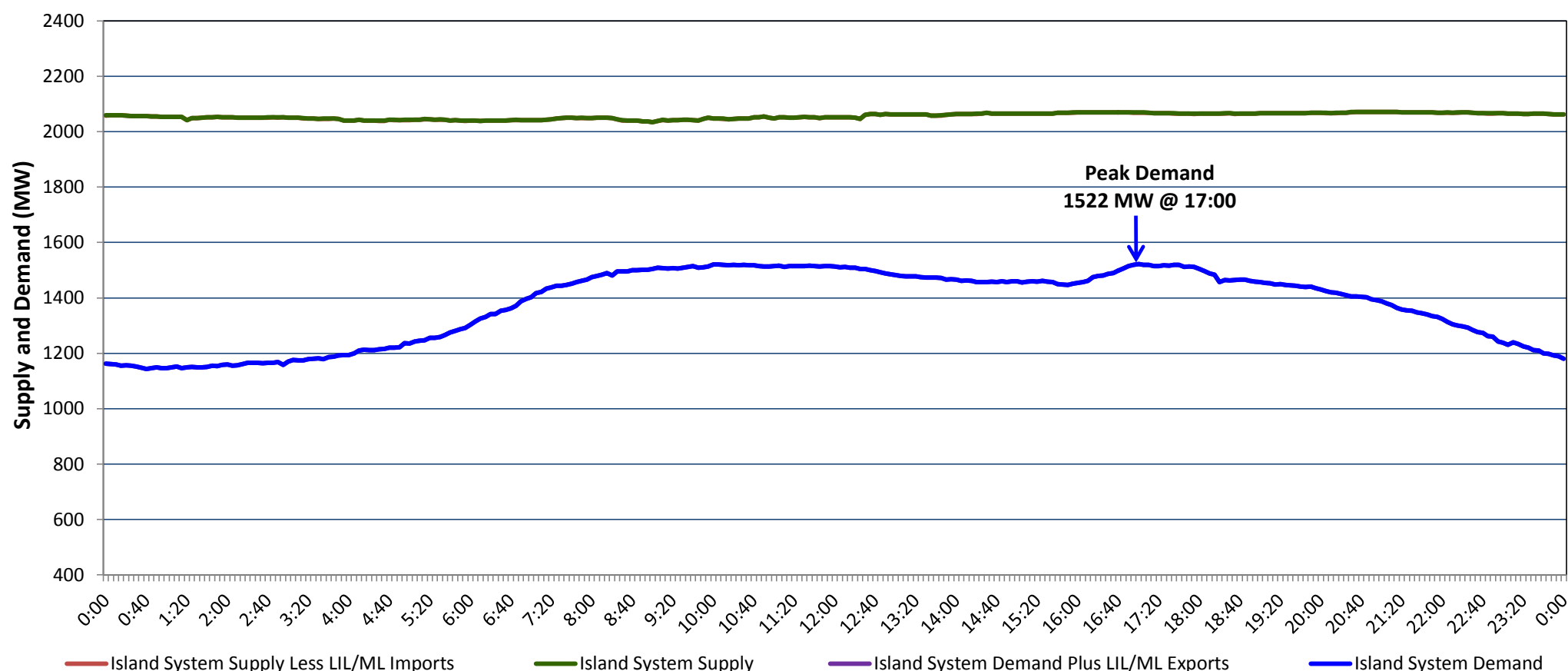


**Newfoundland Labrador Hydro (NLH)
Supply and Demand Status Report Filed Friday, February 12, 2021**

**Section 1
Island Interconnected System Supply, Demand & Exports
Actual 24 Hour System Performance For Thursday, February 11, 2021**



Supply Notes For February 11, 2021

1,2

A At 0754 hours, February 11, 2021, St. Anthony Diesel Plant available at 8.85 MW (9.7 MW).

B At 1658 hours, February 11, 2021, St. Anthony Diesel Plant available at full capacity (9.7 MW).

**Section 2
Island Interconnected Supply and Demand**

Fri, Feb 12, 2021	Island System Outlook ³		Seven-Day Forecast	Temperature (°C)		Island System Daily Peak Demand (MW)	
				Morning	Evening	Forecast	Adjusted ⁷
Available Island System Supply: ⁵	2,060	MW	Friday, February 12, 2021	-1	-2	1,400	1,296
NLH Island Generation: ⁴	1,695	MW	Saturday, February 13, 2021	-5	-4	1,350	1,246
NLH Island Power Purchases: ⁶	135	MW	Sunday, February 14, 2021	-7	-6	1,400	1,296
Other Island Generation:	230	MW	Monday, February 15, 2021	-6	-4	1,355	1,251
ML/LIL Imports:	-	MW	Tuesday, February 16, 2021	-7	-3	1,415	1,311
Current St. John's Temperature & Windchill:	-4 °C	-11 °C	Wednesday, February 17, 2021	0	-5	1,380	1,276
7-Day Island Peak Demand Forecast:	1,500	MW	Thursday, February 18, 2021	-10	-7	1,500	1,395

Supply Notes For February 12, 2021

3

- Notes:
1. Generation outages for running and corrective maintenance are included. These are not unusual for power system operations. They generally do not impact customer supply. The power system operators schedule outages to system equipment whenever possible to coincide with periods when customer demands are low and sufficient supply reserves are available. However, from time to time equipment outages are necessary and reserves may be impacted.
 2. Due to the Island system having no synchronous connections to the larger North American grid, when there is a sudden loss of large generating units there may be a requirement for some customer's load to be interrupted for short periods to bring generation output equal to customer demand. This automatic action of power system protection, referred to as under frequency load shedding (UFLS), is necessary to ensure the integrity and reliability of system equipment. Under frequency events have typically occurred 5 to 8 times per year on the Island Interconnected System and the resultant customer load interruptions are generally less than 30 minutes. With the activation of the Maritime Link frequency controller during the winter of 2018, UFLS events have occurred less frequently.
 3. As of 0800 Hours.
 4. Gross output including station service at Holyrood (24.5 MW) and improved NLH hydraulic output due to water levels (35 MW).
 5. Gross output from all Island sources (including Note 4).
 6. NLH Island Power Purchases include: CBPP Co-Gen, Nalcor Exploits, Rattle Brook, Star Lake, Wind Generation and capacity assistance (when applicable).
 7. Adjusted for curtailable load, market activities and the impact of voltage reduction when applicable.

**Section 3
Island Peak Demand Information
Previous Day Actual Peak and Current Day Forecast Peak**

Thu, Feb 11, 2021	Actual Island Peak Demand ⁸	17:00	1,522 MW
Fri, Feb 12, 2021	Forecast Island Peak Demand		1,400 MW

Notes: 8. Island Demand / LIL / ML Exports (where applicable) is supplied by NLH generation and purchases, plus generation owned and operated by Newfoundland Power and Corner Brook Pulp & Paper (Deer Lake Power, DLP).